

Barr

2

3

7

11

Detailed description: This musical score is for the piece 'Barr'. It is written in treble clef with a key signature of three sharps (F#, C#, G#) and a 2/2 time signature. The score consists of four staves. The first staff is a whole rest, with a '2' above it. The second staff begins at measure 3 and contains the notes: quarter rest, quarter rest, quarter note G4, quarter note A4, quarter note B4, quarter note C5, quarter note B4, quarter note A4, quarter note G4. The third staff begins at measure 7 and contains: quarter note G4, quarter note A4, half note B4, quarter note C5, quarter note B4, quarter note A4, quarter note G4, quarter note F#4. The fourth staff begins at measure 11 and contains: quarter note G4, quarter note A4, quarter note B4, quarter note C5, quarter note B4, quarter note A4, quarter note G4, quarter note F#4.

Battle Hymn

2

3

9

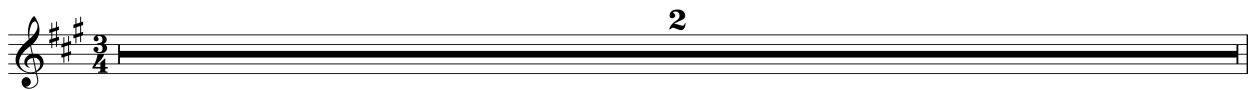
15

Detailed description: This musical score is for the piece 'Battle Hymn'. It is written in treble clef with a key signature of three sharps (F#, C#, G#) and a 2/2 time signature. The score consists of four staves. The first staff is a whole rest, with a '2' above it. The second staff begins at measure 3 and contains: quarter rest, quarter note G4, quarter note A4, quarter note B4, quarter note C5, quarter note B4, quarter note A4, quarter note G4. The third staff begins at measure 9 and contains: quarter note G4, quarter note A4, quarter note B4, quarter note C5, quarter note B4, quarter note A4, quarter note G4, quarter note F#4. The fourth staff begins at measure 15 and contains: quarter note G4, quarter note A4, quarter note B4, quarter note C5, quarter note B4, quarter note A4, quarter note G4, quarter note F#4.

Bewdley



Baja



Bear

Musical score for 'Bear' in 3/4 time, key of A major. The score consists of five staves. The first staff begins with a double bar line and a fermata, with a '2' above it. The melody is written in treble clef. The piece concludes with a double bar line and repeat dots.

7

15

23

30

Big Sur

Musical score for 'Big Sur' in 3/4 time, key of A major. The score consists of four staves. The first staff begins with a double bar line and a fermata, with a '2' above it. The melody is written in treble clef. The piece concludes with a double bar line and repeat dots.

Blessed Abbey

Musical score for 'Blessed Abbey' in G major (one sharp) and 3/4 time. The score consists of five staves of music. The first staff begins with a double bar line and a fermata, with a '2' above it. The second staff starts at measure 7. The third staff starts at measure 13. The fourth staff starts at measure 18. The fifth staff starts at measure 23. The piece concludes with a double bar line and a fermata. The music features a mix of eighth and quarter notes, with several triplet markings (indicated by a '3' above the notes).

Blessing

Musical score for 'Blessing' in G major (one sharp) and 3/4 time. The score consists of three staves of music. The first staff begins with a double bar line and a fermata, with a '2' above it. The second staff starts at measure 3. The third staff starts at measure 7. The piece concludes with a double bar line and a fermata. The music is primarily composed of quarter notes.

Breslau

2



3

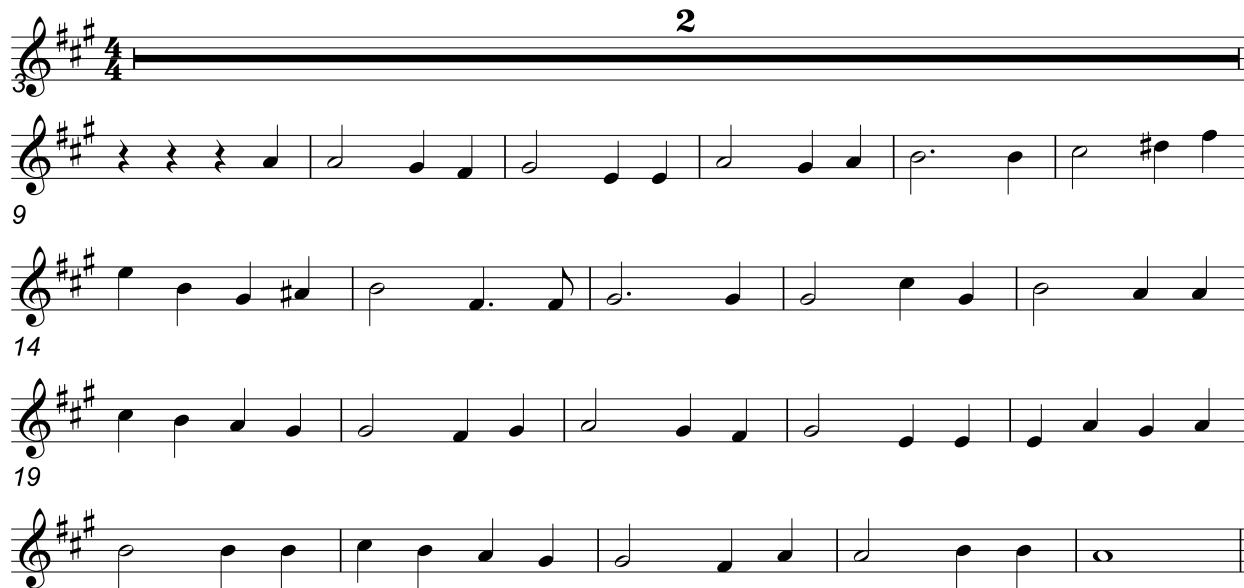
9

15

Detailed description: This block contains the musical score for the piece 'Breslau'. It consists of five staves of music. The first staff is a whole rest, with the number '2' centered above it. The second staff begins at measure 3 and contains six measures of music. The third staff begins at measure 9 and contains six measures. The fourth staff begins at measure 15 and contains four measures. The key signature is three sharps (F#, C#, G#) and the time signature is 3/4. The music is written on a single treble clef staff.

Barnby

2



9

14

19

Detailed description: This block contains the musical score for the piece 'Barnby'. It consists of five staves of music. The first staff is a whole rest, with the number '2' centered above it. The second staff begins at measure 3 and contains six measures. The third staff begins at measure 9 and contains six measures. The fourth staff begins at measure 14 and contains five measures. The fifth staff begins at measure 19 and contains five measures. The key signature is three sharps (F#, C#, G#) and the time signature is 4/4. The music is written on a single treble clef staff.

Bateman

Musical score for 'Bateman' in G major (one sharp) and 2/4 time. The score consists of four staves. The first staff is a whole rest with a '2' above it. The second staff starts at measure 3, the third at measure 9, and the fourth at measure 15. The melody is: G4 (quarter), A4 (quarter), B4 (quarter), A4-G4 (beamed eighth notes), F#4 (quarter), E4 (quarter), D4 (half).

Bealoth

Musical score for 'Bealoth' in G major (one sharp) and 4/4 time. The score consists of four staves. The first staff is a whole rest with a '2' above it. The second staff starts at measure 3, the third at measure 9, and the fourth at measure 14. The melody is: G4 (quarter), A4 (quarter), B4 (quarter), A4-G4 (beamed eighth notes), F#4 (quarter), E4 (quarter), D4 (half).

Beautiful Christmas

2

Musical score for 'Beautiful Christmas' in G major (one sharp) and 4/4 time. The score consists of five staves of music. The first staff is a blank staff with a treble clef, a key signature of one sharp (F#), and a 4/4 time signature. A large number '3' is written below the first staff. The second staff begins with a treble clef, a key signature of one sharp, and a 4/4 time signature. It contains the first line of music, starting with a quarter note G4, followed by quarter notes A4, B4, and C5, then a half note B4, and a quarter note A4. The third staff continues the melody with a quarter note G4, a half note F#4, a quarter note E4, a half note D4, a quarter note C4, a half note B3, and a quarter note A3. The fourth staff continues with a quarter note G3, a half note F#3, a quarter note E3, a half note D3, a quarter note C3, a half note B2, and a quarter note A2. The fifth staff concludes the piece with a quarter note G2, a half note F#2, a quarter note E2, a half note D2, a quarter note C2, a half note B1, and a quarter note A1. A large number '10' is written below the second staff, a large number '16' below the third staff, and a large number '22' below the fourth staff.

Bellman

2

Musical score for 'Bellman' in G major (one sharp) and 4/4 time. The score consists of four staves of music. The first staff is a blank staff with a treble clef, a key signature of one sharp (F#), and a 4/4 time signature. A large number '3' is written below the first staff. The second staff begins with a treble clef, a key signature of one sharp, and a 4/4 time signature. It contains the first line of music, starting with a quarter note G4, followed by quarter notes A4, B4, and C5, then a half note B4, and a quarter note A4. The third staff continues the melody with a quarter note G4, a half note F#4, a quarter note E4, a half note D4, a quarter note C4, a half note B3, and a quarter note A3. The fourth staff concludes the piece with a quarter note G2, a half note F#2, a quarter note E2, a half note D2, a quarter note C2, a half note B1, and a quarter note A1. A large number '10' is written below the second staff, and a large number '15' below the third staff.

Benediction

2

3

7

12

Detailed description: This block contains the musical score for 'Benediction'. It consists of four staves of music in G major (one sharp) and 4/4 time. The first staff is a double bar line with a '2' above it. The second staff begins at measure 3, the third at measure 7, and the fourth at measure 12. The music is written in a simple, melodic style with quarter and eighth notes.

Bernard

2

3

9

14

Detailed description: This block contains the musical score for 'Bernard'. It consists of four staves of music in G major (one sharp) and 4/4 time. The first staff is a double bar line with a '2' above it. The second staff begins at measure 3, the third at measure 9, and the fourth at measure 14. The music is written in a simple, melodic style with quarter and eighth notes.

Beverly Park

2

Musical score for Beverly Park, consisting of four staves of music in treble clef, 4/4 time, and A major key. The first staff is a whole rest. The second staff begins at measure 3. The third staff begins at measure 8. The fourth staff begins at measure 15. The piece concludes with a double bar line at the end of the fourth staff.

Blaencefn

2

Musical score for Blaencefn, consisting of four staves of music in treble clef, 4/4 time, and A major key. The first staff is a whole rest. The second staff begins at measure 3. The third staff begins at measure 7. The fourth staff begins at measure 11. The piece concludes with a double bar line at the end of the fourth staff.

Bless the Lord

2

3

7

Detailed description: This block contains the first three staves of musical notation for the hymn 'Bless the Lord'. The first staff is a double bar line with a '2' above it, indicating the start of the second measure. The second staff begins at measure 3 and contains the first line of melody. The third staff begins at measure 7 and contains the second line of melody. The key signature is three sharps (F#, C#, G#) and the time signature is 4/4.

Blessed Are They That Do

2

3

9

14

Detailed description: This block contains the first four staves of musical notation for the hymn 'Blessed Are They That Do'. The first staff is a double bar line with a '2' above it, indicating the start of the second measure. The second staff begins at measure 3 and contains the first line of melody. The third staff begins at measure 9 and contains the second line of melody. The fourth staff begins at measure 14 and contains the third line of melody. The key signature is three sharps (F#, C#, G#) and the time signature is 4/4.

Blessed Be the Name

2

3

9

14

Detailed description: This musical score is for the hymn 'Blessed Be the Name'. It is written in treble clef with a key signature of three sharps (F#, C#, G#) and a 4/4 time signature. The score consists of four staves. The first staff is a whole rest, with a '2' above it. The second staff begins at measure 3 and contains the first line of the melody. The third staff begins at measure 9 and contains the second line of the melody. The fourth staff begins at measure 14 and contains the third line of the melody. The piece concludes with a double bar line at the end of the fourth staff.

Blessed City

2

3

8

12

Detailed description: This musical score is for the hymn 'Blessed City'. It is written in treble clef with a key signature of three sharps (F#, C#, G#) and a 4/4 time signature. The score consists of three staves. The first staff is a whole rest, with a '2' above it. The second staff begins at measure 3 and contains the first line of the melody. The third staff begins at measure 8 and contains the second line of the melody. The fourth staff begins at measure 12 and contains the third line of the melody. The piece concludes with a double bar line at the end of the fourth staff.

Bochum

2

Musical score for 'Bochum' in G major (one sharp) and 4/4 time. The score consists of four staves. The first staff is a double bar line with a '2' above it. The second staff begins at measure 3. The third staff begins at measure 9. The fourth staff begins at measure 15. The piece concludes with a double bar line at the end of the fourth staff.

Bonar Calkin

2

Musical score for 'Bonar Calkin' in G major (one sharp) and 4/4 time. The score consists of four staves. The first staff is a double bar line with a '2' above it. The second staff begins at measure 3. The third staff begins at measure 8. The fourth staff begins at measure 12. The piece concludes with a double bar line at the end of the fourth staff.

Bonham

2

3

8

14

Brent Tor

2

7

12

17

Bristol

2

3

7

Broomsgrove

2

3

9

15

Neighbors

2

Musical score for 'Neighbors' in 4/4 time, key of D major. The score consists of five staves. The first staff is a grand staff with a treble clef and a 4/4 time signature, containing a whole rest. The second staff begins at measure 3. The third staff begins at measure 9. The fourth staff begins at measure 13. The fifth staff begins at measure 17. The music features a mix of quarter, eighth, and half notes, with some rests.

Baur

2

Musical score for 'Baur' in 6/8 time, key of D major. The score consists of four staves. The first staff is a grand staff with a treble clef and a 6/8 time signature, containing a whole rest. The second staff begins at measure 3. The third staff begins at measure 9. The fourth staff begins at measure 14. The music features a mix of quarter, eighth, and half notes, with some rests.

Be of Good Cheer

Musical score for "Be of Good Cheer". The score is written in treble clef with a key signature of three sharps (F#, C#, G#). It begins with a double bar line and a fermata, with a "2" above it. The first measure is marked with a "3". The melody consists of eighth and quarter notes, with some rests. The score is divided into four systems, with measure numbers 3, 9, and 14 indicated at the start of each system.

Beautiful Isle of Somewhere

Musical score for "Beautiful Isle of Somewhere". The score is written in treble clef with a key signature of three sharps (F#, C#, G#). It begins with a double bar line and a fermata, with a "2" above it. The first measure is marked with a "3". The melody consists of quarter and eighth notes, with some rests. The score is divided into four systems, with measure numbers 3, 9, and 14 indicated at the start of each system.

Beautiful Songs of Praise

Musical score for "Beautiful Songs of Praise". The score is written in treble clef with a key signature of three sharps (F#, C#, G#) and a 6/8 time signature. It consists of four staves. The first staff is a whole rest with a measure number of 2 above it. The second staff begins at measure 3 and contains the melody. The third staff begins at measure 9 and continues the melody. The fourth staff begins at measure 14 and concludes the piece. The melody is characterized by eighth and quarter notes, with some rests and a final half note.

Beautiful Robes

Musical score for "Beautiful Robes". The score is written in treble clef with a key signature of three sharps (F#, C#, G#) and a 4/4 time signature. It consists of five staves. The first staff is a whole rest with a measure number of 2 above it. The second staff begins at measure 3 and contains the melody. The third staff begins at measure 8 and continues the melody, featuring a change in time signature to 6/8 at measure 13. The fourth staff begins at measure 15 and continues the melody. The fifth staff begins at measure 21 and concludes the piece. The melody is characterized by eighth and quarter notes, with some rests and a final half note.

Bourbon

2



Barragh

2

